

# Stewards of the Coast and Redwoods

Preservation through Education and Stewardship

Russian River Sector State Parks

Volume XXXV, Number 3, Fall 2020



## From Wildfires to Witnessing Regrowth

Michele Luna, Executive Director

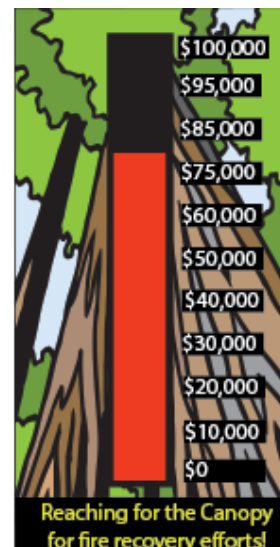
On August 17th, what has become known as the Walbridge Fire was ignited by lightning strikes in the backcountry near Austin Creek State Recreation Area. The fire burned a significant percentage of land in both Austin Creek SRA, including Bullfrog Pond Campground, and our beloved Armstrong Redwoods State Natural Reserve. Fortunately, fire is good for the landscape, however not so good for those who have been displaced due to the closing of these two parks that Stewards co-manages in partnership with California State Parks. Two State Park employees have been directly affected by the fire, one who lost everything.



Burned tool trailer in campground

Stewards' losses include close to \$20,000 worth of tools and equipment that burned with our utility trailer and in an Austin Creek storage barn. More significant is an ongoing loss of revenue from day-use and camping fees and visitor center sales while these two parks remain closed into 2021 during fire recovery. Our current losses come on the heels of those resulting from almost two months of Covid-19 park closures, from March 24th to May 14th. On August 26th, Stewards launched our Fire Recovery Fund campaign and the response has been uplifting. Our initial goal was

to raise \$100,000 and as of October 1 you have helped us bring in close to \$80,000. Moving into next year, more funding will be needed to help with recovery efforts, including the restoration of Bullfrog Pond Campground.



*Your contributions to our Fire Recovery Fund will help bring back staff and volunteers to carry out the important work that lies ahead*

At this time, all of our staff are working half time in order to hold onto the reserves we currently have in place. We will gradually restore staffing levels as needed funding becomes available.

Stewards stands ready to assist State Parks with fire recovery, which will include:

- Restoring infrastructure at Bullfrog Pond campground
- One rest room
- Water system
- Picnic tables, food lockers and signage
- Restoring fencing
- Rebuilding trails
- Clearing burned and hazardous trees



Burned restroom in the campground

State Parks continues to work exhausting hours to address unsafe conditions in the parks. There are still root fires in many trees in Armstrong Redwoods that are being doused with water. Significant rainfall is needed to adequately put out these spot fires, after which additional time must be allowed for weakened trees to fall as a result. This will all take place over a number of months, making it very important for safety reasons that the public stay away. There is now a gate at the entrance to Armstrong Redwoods, and only authorized personnel and residents who use the road to access their homes are allowed through. **Please help us by staying away until your beloved parks are safe again.**

Continued on Page 2

## Mission

Stewards Promotes, Restores & Protects Your State Parks.

## Vision

Stewards is the link between people and their parks.

## State Parks

Armstrong Redwoods State Natural Reserve  
Austin Creek State Recreation Area  
Sonoma Coast State Park

## Contact

PO Box 2  
Duncans Mills, CA 95430  
(707) 869-9177  
(707) 869-8252 Fax  
[stewards@stewardscr.org](mailto:stewards@stewardscr.org)  
[www.stewardscr.org](http://www.stewardscr.org)

## Board Members

Donna Roper, President  
Hollis Bewley, Vice President  
Kathi Moore, Secretary  
Gregory Fearon, Treasurer  
Marcy Beck  
Jeff Edmonds  
Brittany Kelly  
Peter Stern  
Dale Wannan

## Advisory Board

Bill Bambrick  
Cindy Brennan  
Jan De Wald  
Christopher Szcsey

## California State Parks

Terry Bertels, District Superintendent  
Mike Lair, Sector Superintendent  
Greg Probst, CAL  
Amelia Schall, District Vol. Coordinator

## Stewards Staff

Michele Luna, Exec. Director  
Annie Cresswell, Admin. Dir.  
Leslie Carrow, Admin. Assistant  
Nik Szcsey, Retail Coordinator

## Field Operations Mgr.

Scott Lawyer

## Assist. Field Operations Mgr.

Rachel Hathaway

## Service Aides

Carlos Amador

# Witnessing Regrowth

*Continued from page 1*

*Photos by Michele Luna*

While the challenges we are facing in 2020 are like nothing we have seen before, I can assure you all that Stewards remains resilient and that I am working closely with staff, our board of directors and State Parks to navigate these uncertain times while keeping our mission and vision of restoration and connection to our parks front and center.

Just the other day, I saw for myself the regrowth that is already taking place in our parks. What a welcome sight to find bracken ferns coming up in the ash near Vista Point! Redwoods amidst the blackened landscape are also sprouting. We're going to have a wonderful wildflower season in the Spring when we should have a better idea when we might be able to reopen your parks. While it's going to take a huge level of effort, especially to restore Bullfrog Pond Campground, the out-



pouring of volunteer support being offered has been extraordinary. We hope you won't get discouraged as we work towards the time that we can welcome volunteers back to steward these park lands. Again, your safety is our biggest concern.

You can see from the accompanying photo just how much wood there is to process that is being brought down from Austin Creek into the Armstrong Redwoods picnic area. This is just the beginning of the work ahead. We may be asking a few of our long-time highly trained volunteers to help us with processing downed wood once State Parks approves and we replace our wood splitter, that was lost in the fire.

## Armstrong Redwoods SNR & Austin Creek SRA Closed

Both Armstrong Redwoods SNR and Austin Creek SRA will be closed for many months. The best case scenario will be opening parts of Armstrong Redwoods by late Spring or early Summer. The areas most affected in Armstrong are near the Armstrong Tree, the picnic area, by the Stewards office/Volunteer Center, park maintenance area and the East and Pool Ridge trails. Stewards will work with State Parks to identify new ways that we can reopen safely, including scheduled docent-led "fire walks." We know you are anxious to see for yourselves how the fire has affected your favorite places to walk, hike and find solace.

In general, most of the 5700 acres of Austin Creek burned. As mentioned above, Bullfrog Pond Campground is going to take a lot of work before it can be open again. State Parks is still assessing the damage and what it will take to restore critical infrastructure, including the water system and the burned restroom.



Many thanks for your patience as we work in partnership with State Parks to get your parks back open again.

## Volunteer Trail Crew - Busy 3rd Quarter

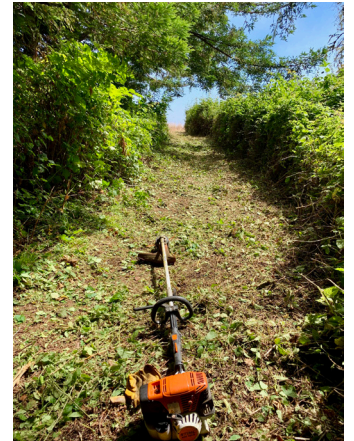
Rich Lawton - Trail Crew Coordinator (filling in for Bill Bambrick), Photos by Mark Anderson

After the COVID-19 restrictions were lifted, the Trail Crew started off with a fuel reduction program at Austin Creek State Recreation Area. We began removing small fir trees along the road from Bull Frog Campground and the Riggs Ranch. Fir trees under 4 inches were removed along with several downed trees. Goal was to work up to removing trees under 11 inches in diameter. All trees were to be removed within 150 feet of the roadway. The crew also did some fuel reductions around the Pond Farm Complex: we mowed and weedwacked the area and removed small fir trees. In August the Walbridge Fire (which burned most of Austin Creek SRA and into Armstrong Redwoods SNR) suspended all Volunteer operations for the remainder of the month and possibility into 2021. (Editor's note: We are very grateful to this crew for helping to alleviate some of the fuel load before the Walbridge fire descended on our parks).



In Willow Creek, we cleared Seven Springs Trail, Islands in the Sky Vista Trail, Full Monte Trail, the Badger Hill Overlook, Hunters Camp Road and the Jamboree Trail. Several small trees which were obstructing trails and roads were also removed.

At Sonoma Coast, we weedwacked and brushed the Pomo Trail. About ¾ of a mile of the trail was impassable to even the best of our "bushwhackers," with chest high vegetation covering the trail. We returned to Red Hill Trail and completed clearing the Coyote Brush from the trail and weedwacking the last mile of trail.



Willow trees were cleared from the Kortum Trail near Carlevaro Way and we are working to complete clearing the remainder of the Kortum Trail.



All the trail work resulted in a six foot vegetation (grass) fire fuel break. The Hunters Camp Fire Road now has an additional six foot fire fuel break.

The Public Assistance Trail Patrol continued to provide accurate feedback on trail conditions so the Trail Crew can adjust priorities. Keep those reports coming and please cc a copy to me at [ranger-lawton@aol.com](mailto:ranger-lawton@aol.com).

If you would like to join this fun park loving group at Sonoma Coast State Park check Stewards website at: <https://www.stewardscr.org/sonoma-coast-volunteer-program-trail-crew.html>

We all work and learn together as a team and have a lot of fun. In the past few years we have built woodsheds in Bodega Dunes and Wrights Beach, built bridges, re-routed trails, dropped large and

small trees, cleared many miles of trails and much more.

Beside the COVID 19 and the Walbridge Fire setbacks, we also had our long time Trail Crew Co-coordinator Bill Bambrick head for the shops for repairs. We miss you Bill, please return soon.

**Volunteers will be needed to help with Fire Recovery efforts at Armstrong Redwoods SNR and Austin Creek SRA once the parks are free of hazards, which may not be until 2021. We greatly appreciate all the offers of help we have been getting. New volunteers will need to fill out State Park paperwork and sign up through the Better Impacts portal so they can give out an application and record their hours.**

Information is on this page of our website: <https://www.stewardscr.org/volunteer-opportunities.html>

## VOLUNTEER OPPORTUNITIES

Interested in a program?  
Call Stewards at  
(707) 869-9177 or email  
[stewards@stewardscr.org](mailto:stewards@stewardscr.org)

## PROGRAMS

### Armstrong Redwoods/ Austin Creek

Visitor Center Staffing  
Docent Tour Guides  
Trail Crew/Maintenance  
Pond Farm Docent Tours  
Roving Docents/Public  
Assistance  
Lizzie Armstrong Welcome Ctr

### Sonoma Coast State Park

Visitor Center Staffing  
Seal Watch  
Whale Watch  
Tide Pool Program  
Watershed Program  
Sonoma Coast Trail Crew  
Willow Creek Trail Crew  
Pinniped Monitoring  
Seabird Monitoring  
Roving Docents/Public  
Assistance  
**Other Projects**  
Mobile Marine Van  
Forest to Sea Nature Store  
Office Help & Special Events

## VOL. PROGRAM COORDINATORS

Vacant, Watershed  
Greg Armstrong, Seal Watch  
Mary Follis, Seal Watch  
Vacant, ARVC  
Rich Lawton & Bill Bambrick,  
Trail Crews  
Hollis Bewley, Seabird &  
Tidepool Programs  
Linda Fisher & Joan Bacci, JVC  
Norma Jellison, Whale Watch  
Rich & Colleen Draffin, Whale  
Watch  
Michael Murphy, AC Mounted  
Assistance Unit

## Whales at this time of year

*Norma Jellison, Whale Watch Coordinator*

So many events have gotten in the way of even getting to Bodega Head in the past few months that it is a challenge to report on what whales were seen off the coast. That is of course if one could see through the recent pervasive smoke. Yes, even out at the coast it has been smoky!

Earlier in the summer, Blue Whales sightings were in the news as record numbers were seen out at the Farallones, off Pt. Arena Lighthouse and even a few miles off Bodega Head at times. The Humpback numbers and show through August were also outstanding, All thanks to lots of krill, which is always good for salmon fishing as well!

Further afield, there is a new calf (J57) born to J35 of the J Pod of the Resident Orcas off San Juan Island. As is their tradition, there was a super pod gathering, legendary in the report, of all the J, K and L Pods who gathered to see and celebrate the birth of the newborn. You can see this, including a [fantastic video of the superpod](#), on founder [Ken Balcomb's Center for Whale Research site](#). (<https://www.whaleresearch.com>)

With so much in flux at this point, it is hard to predict what the Whale Watch season will look like. We do plan to proceed with the Whale Watch training and orientation (virtual) on Saturday, November 14. Watch for more specifics on that in upcoming Stewards newsletters.

You never know what nature will send your way, so keep your eyes and ears open when you head out to the coast. And PLEASE, "pack it in and pack it out" and pick up some litter inadvertently left by others. Every piece that does not make into the ocean is a plus for marine life.

## Whale Watch Orientation

[Whale Watch Training](#) - November 14, 9:30 am to 1:30 pm

Virtual Zoom Orientation - link will be sent to those who sign up ahead of time.

**Trainers: Norma Jellison, Rich and Colleen Draffin and Stewards' and State Park Staff**

The Whale Watch Public Education Program was started in 1986 by our Whale Mother, Bea Brunn, as a response to the public's growing concern and awareness of the fragile relationship with the dwindling population of remaining whales. In this training, you will learn about Pacific Gray Whale physiology, migration, breeding habits, and other facts to share with the public. Docents are stationed at Bodega Head on weekends from January through June.



For more information contact [stewards@stewardscr.org](mailto:stewards@stewardscr.org).

Sign up at: <https://www.stewardscr.org/events/whale-watch-volunteer-training-1>

## Volunteer Hours Due soon

Our State Park District Volunteer Coordinator, Amelia Schall, is asking volunteers to start entering your 2020 volunteer hours into the State Park Better Impacts portal. We know many of you haven't been able to volunteer as much as you usually do but, nonetheless, your hours are important to record. Amelia is available to help so feel free to contact her at [amelia.schall@parks.ca.gov](mailto:amelia.schall@parks.ca.gov). Those of you who earned District (24-hour) day-use passes for 2020 will have them extended for 2021 by Superintendent order. Statewide (200-hour) passes will most likely be extended for a few months into 2021, pending a decision from State Parks headquarters in Sacramento. Stay tuned for more updates in our weekly enewsletter. Thank you to all volunteers for sticking with us during these challenging times.

## Save these Dates

Virtual Annual Organization and Operating Meeting - Thursday, October 29, 2020 at 5:30

Virtual Volunteer Celebration - Thursday, December 3, 2020 - time TBD

## New Diversity and Equity Committee

Stewards is recruiting members of our Sonoma County community to join our new Diversity and Equity Committee. While creating more diversity within our board, staff and volunteers has been an ongoing goal of Stewards, we are now making a stronger commitment to this objective. Board members Brittany Kelly and Christopher Szcsey will lead this committee with participation by other board members, staff, volunteers and community members. The fires in our parks have delayed scheduled meetings, but we plan to convene again (virtually) as soon as possible. The committee will help us solidify strategic planning objectives for incorporation into Stewards' action plans going forward, building on our June Black Lives Matter statement. Initial objectives include:

- Community Building by creating genuine relationships with BIPOC community members to promote environmental justice.
- Creating a Community to Career Pipeline for BIPOC youth and adults to enter the field of conservation and ecology.
- Increasing BIPOC participation in leadership, training & program roles within Stewards.

## More Wallbridge Fire Photos in our Parks



Photos: Left to Right by Row

1a) Day 1

1b) Fire on McMahan Rd.

2a) Firefighter in the Grove

2b) Lost home in Austin Creek SRA

3a) Overlooking the Austin Creek back country

3b) Staging area at front of Armstrong Redwoods

3c) Pond Farm Pottery Saved

4a) Colonel Armstrong Tree during the fire

4b) Colonel Armstrong Tree after the fire

4c) View of Austin Creek from Armstrong Woods Rd



# In Appreciation of Our Donors, Sponsors & Funders ~ 2019 & 2020

Special thanks to major donors who moved up their donations to earlier in the year to help us with revenue reductions due to Covid-19 and fire recovery.

## \$20,000 to \$30,000

Marcy Beck  
Gregory Fearon  
Resources Legacy Fund Foundation  
Sonoma County Vintners Foundation

## \$10,000 to \$14,999

California State Parks Foundation  
Caryl and Michael Hart  
Kristin Hite

## \$5,000 to \$9,999

Rhonda Berney  
County of Sonoma  
Clare Dorfman  
Fred and Jocelyn Euphrat  
Carmen J Finley PhD  
Laura Morgan  
Sara Oswald  
Neil & Amelia McDaniel Charitable Trust  
Julia Terr Fund for Ceramic Arts  
Russian River Recreation and Parks

## \$2,500 to \$4,999

Bodega Bay Fisherman's Festival  
Doug and Leslie Bowman  
Art Carter  
Estate of Josephine C. Marks  
Karen Guenther  
Mark Johnson  
Kathryn A Law  
Carol and Peter Lucic  
Dennis P Martino  
John Roulac  
Russian River Chamber of Commerce

## \$1,000 to \$2,499

Mary B Abbott  
Harold C Appleton  
Allen Bealer  
Hollis Bewley  
Jennifer Bice  
Cindi Blair  
Charyl and Mark Patterson  
Ann T Brice  
John and Ethel Cole  
Cyd Dunning  
Margo Eachus  
Dennis Fisco  
Friends of China Camp

Janell Galanis  
Barbara Gegan  
Michele Gochberg  
Gurdjieff Foundation of CA  
Yulahlia Hernandez  
Laura Holms  
Daniel Karbousky  
Brittany Kelly  
Eileen Keremitsis  
Beth Lamb  
Carol and Peter Lucic  
Marie Martinez  
Hayley McNitt  
Forrest L Merrill  
Clark and Carol Mitchel  
Kathi Moore  
Laura Morgan  
Michelle Morris  
Michael Hofman and Janet Moyer  
Bill and Karen Nay  
Gerard Nebesky  
Fawn and James Nekton  
Jennifer O'Keefe  
Richard and Jennifer Palmer  
Barbara J Parkyn  
Elizabeth Penn  
Diane Perry  
Laurie Prothro  
Betty Riess  
Donna Roper  
Russian River Rotary  
Russian River Sisters Inc  
Janet and Joaquin Sanchez  
Save the Redwoods League  
Richard Shipp  
Michelle Sprinkle  
Christopher and Mary Szcsecy  
Leonard Fisher and Risa Teitelbaum  
John Tolonen  
Tom Toy  
Keith Volkerts  
Virginia Wallace  
Dale Wannan  
Warren and Janis Watkins  
Friends Willowside Middle School  
Hannah Yurth  
Julie Zigoris  
Elizabeth Zitrin

## \$501 to \$999

Jamie Archer  
Joan Bacci  
Mary and Philip Beard  
Lisa Bilodeau  
Patricia and Pete Biocini  
Bryan Bowen  
Mary Burger  
Linda Clopton  
Mrs Connie Codding  
Arthur Deicke  
Stacey Dominik  
M DuBose  
Cal Academy of Sciences  
Alison Duke  
Paul Fajnor  
Rachael Fisher  
Elisabeth Fletcher  
Michael Foss  
Stefanie Freele  
Victoria Fullerton  
Karen Grebbia  
Sara Gunter  
Michael Haran  
Suzanne Herr  
Steve & Nicki Hinch  
Chelsey Kolbeck  
Patrick Laherty  
Les and Nancy Lewis  
Erika Lutz  
Julie Miller  
Leslie Millerd  
Leslie Mills Risbrough  
Rosaleen Murphy  
Donald and Diana Jo Nunemaker  
Douglas and Phyllis Onstad  
Pacific Gas and Electric  
Austin Parnow  
Martin Polsan  
Dr Jan Randall  
Shannon Rogge  
Andrea Rosenfield Wolf  
Ruthie Saia-Brazil  
Kat Stephens  
WestAmerica Bank  
JoAnn and Stephen Wilson  
Expeditionary Learning Parents Assoc.  
Rosemary Yates  
Sandy Zackaray

## \$500

Michael and Paula Aja  
Beth Ann Gerstein  
Alyssa Benedetto  
Wendy Born  
Patricia and Michael Busk  
N D Cary  
Kathryn Deems  
Peter and Mary Deneen  
Colleen Draffin  
Gary Frenkel  
Terry Grant  
Kristin Hermanson  
The Heck Foundation  
Nolan and Darcy Hughes  
Nancy James  
Walter Krampf  
Greg Lanctot and Jenny Lopez-Lanctot  
Ellen Matics  
Anthea McDonald-Abbott  
Friends MJZ Productions  
Sue Mobley  
J Mullineaux  
LaWanda Page  
Theo Park  
John Pendleton  
Roland Pesch  
Larry Robinson  
Jared Robinson  
Joe Rogoff  
Stefan, Rupal, Ayanna & Ryken Beck  
Sandra M Santana-Mora  
Martha Sbarbori  
Kelsey Sheofsky  
The Gilbert Fund  
The Ruffledog Fund  
Dewey and Susan Watson  
Shona Weir  
Sheila Wong  
Jeffrey Wong  
Susan Cohen and Robert Youngs

## Picnic Table Donor Program Four new tables are needed in Austin Creek

Stewards is offering supporters an opportunity to donate an ADA-compliant picnic table in one of our state parks. Your table can have your family name, a memorial designation or be engraved to honor a loved one. Tables are 8 feet long and 3 inches thick and made out of con-heart redwood.

For info contact: [michele@stewardscr.org](mailto:michele@stewardscr.org)



## Welcome to New Members ~ 3rd Quarter

We are grateful to report that our fire recovery campaign has brought in over 200 new members to Stewards.

### Osprey Circle

Kristina Anderson  
Stefan Beck Family  
Wendy Born  
Ann T Brice  
Dennis Fisco  
Victoria Fullerton  
Laura Holms  
Nancy James  
Katharine Miller  
Roland Sawyer  
Kelsey Sheofsky  
Jared Robinson  
Larry Robinson  
Joseph Wiedman  
Sheila Wong

### Gray Whale

Peter Argyropoulos  
Hallie Benjamin  
Mary Cuoio  
Kenneth Earle  
Nancy Essaff  
Dan Gerber  
Nancy Fullmer

### Bobcat Business

Ben Ayer  
Andrew Beahrs  
Lorraine Bruno  
Cecille Catterson  
Will & Cynthia Collier  
Emily Cornelius  
Karen and Rick Corrigan  
Dora Halperin  
Jose & Martha Lopez  
Sara Martin  
Amy Schmalz  
Allison Spreadborough  
Timothy Steele

Olivia Wallach  
Gary Weiner  
Allan Yeager

### Harbor Seal (Contributing)

Rebecca Shipps  
Richard Turner  
Suzanne Baxter  
Steven Rodgers  
Brigitte Grimshaw  
Jana Hirsch  
Brinton Poe  
Deb McGauley  
Shelley Begley  
Ronald Welch  
Ann Monge  
Larry Zech  
Patricia Wilburn  
Paul Olsen  
Louise Madrid  
Paul West  
Claudia Moura  
Mark Weaver  
Pamela Conley  
Cheryl Bertini-Kataoka  
Dirkje Frey  
Beverly McKee  
Aron Michalski  
Linda Price  
Jill Schlegel  
Carla Grady  
Jane McDonough  
Michel Alexander  
Nancy L Zanolini  
Felicia Matto-shepard  
Kathleen McGreevy  
Mary Pierce  
David Rosen  
Isabel Auerbach

George Tuttle  
Paula Hatfield  
Rhonda Bellmer  
Gregory Davis  
Cameron Black  
Camilla Dunham  
James Campbell  
Allyn Kaufmann  
Bruce Dicoskey  
Bruce Rodgers  
Nancy Durgin  
Rebecca Blackner  
Shannan Johnson  
Jim Isermann  
Teresa Provenzano  
Brenda Adelman  
David Nelson  
Mary Beck  
Teresa Moore  
Jessica Meyer  
Ann Strack  
Elizabeth Robinson  
Sue Bates-Piintar  
Andrew Scott  
Stan & Carole Chapman  
Adele Gower

### Otter (Family)

Mary V Halstead  
David Bjorklund  
Emily Brodsky  
Natalie Paraiso  
Bernadette Lane  
Whitney Trump  
Romina Camacho  
Hunter Oatman-Stanford  
Dana Carlson  
Carolyn Patrick  
Kelly Paquette  
Barbara Parmenter  
George Loyer

Chris Goodfellow  
Aaron Rogoff  
Juliana Hinch  
Linda Sullender  
Jeni Turner  
Sonia Byck-Barwick  
Amy Bush  
Abigail Kingan  
Alexander Morris  
Susan Bower  
Bethany Wilson  
Muncie Harper  
Sharyn Brain  
Dana Gordon  
Anya Starovoytov  
Julianne Overshiner  
Bryan Sullivan  
Tiare Giardina  
Elizabeth Warner  
Joe Kralick  
Gabriel Dillon  
Liv Combe  
Missy Danneberg  
Noah Horowitz  
Jennifer Harrison  
Evanthe Lindenau  
Robert Munro  
Susan Gonzalez  
Anthony Copioli  
Danya Martin-Voelker  
Kevin Jude  
Wei-min Wang  
Kendra Cunov

### Trillium (Individual)

Hector Reyes  
Timothy Patriarca  
Adrienne Leihy

Joseph Franco  
Jean Holzgang de Buren  
Dalila Boussaid  
Carole Mudge  
Kim Cheadle  
Anja Seitz  
Dani Burlison  
Andrina Enriquez  
Katherine Crank  
Tessa Briggs  
Helen Argyres  
Heather Hanford  
Gloria Frere  
Jeremy Crowe  
Sonia Binnendyk  
Michael Mackinnon  
Emily Allen

### Owl (Senior & Student)

Troy McFadden  
Charlotte Ristad Vrobel  
Ellen Shick  
Julie Norgrove  
Millie Anderson  
Jeremy Joan Hewes  
Nancy Sanders  
Valerie Quinn  
Laura Zaccheo  
Jessica Whipple  
Benjamin Callison  
Kristin Fraser  
Andrea Kittie Bernott  
Joann Steck-bayat  
Maggie Ballard  
Jennifer Ellis  
Glenn Stocki  
Laini Piva  
Wendy Patterson

Beryl Cook  
Anjelica Hall  
Bob Likins  
Daniel Stroud  
Martha Lownes  
Jacqua Miller  
Lana Marks  
Ilya Katsnelson  
Judith Osiecki  
Shook Chung  
David McLean  
John Berton  
Gregory Tripp  
Rebecca Durr  
Luda Fisk  
Donald Hansen  
Jacob Winik  
Margaret Ruden  
Lizzie Leech  
Valerie Tisdell  
Michael Gordon  
Suzanne Farrell  
Ian Faerstein  
Laura Handeland  
Douglas Whitchard  
Paula B Litzky  
Laurel Chambers  
Rachel Chalmers  
Vladimir Buldyrev  
Colin Dignam  
Eric Migicovsky  
Emily Schmalhofer  
Amy Racina

## Ways to Leave a Legacy ~ more info at [www.stewardscr.org/leave\\_a\\_legacy.html](http://www.stewardscr.org/leave_a_legacy.html)

Board member Jeff Edmonds presented information about Donor Advised Funds and about Beneficiary Designations on page 5 of the [Summer 2018 newsletter](#). A Bequest example is also included below. Board member Dale Wannan would like you to consider these giving options:

**Gifting Appreciated Stock** - If you're fortunate enough to own stock that has gone up in value since you purchased it, you may consider a gift to Stewards. This will not only help a good cause, but enable you to reap substantial tax savings.

**Designate Stewards as a Beneficiary on your IRA** - These days, many people have a large percentage of their wealth in the form of traditional IRA accounts. Consider designating Stewards as one of the beneficiaries of your IRAs.

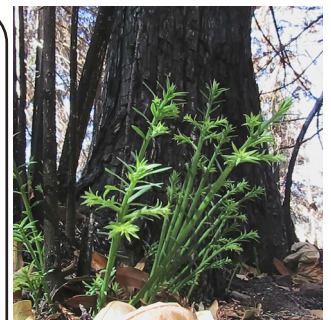
### Bequests

#### Your Gift to the Future of State Park Preservation

With your gift of a bequest, future generations will enjoy the State Parks in the Russian River District, including education and stewardship programs supported by Stewards. A gift to Stewards is a rewarding form of giving from your estate. There are several types of charitable bequests by will (or beneficiary designation).

**Example:** *I hereby give and bequeath to Stewards of the Coast and Redwoods, a nonprofit organization incorporated under the laws of the State of California, with a principal address at P.O. Box 2, Duncans Mills, CA 95430, (\_\_\_\_) percent of my estate, (or) the sum of (\_\_\_\_) dollars, (or) the following assets (\_\_\_\_). Tax ID # 94-3039895*

For more information and other planned giving options, please contact Michele Luna at [michele@stewardscr](mailto:michele@stewardscr).



Redwood Regeneration  
Photo by Maya Khosla

# Stewards of the Coast and Redwoods

PO Box 2, Duncans Mills, CA 95430

OFFICE (707) 869-9177 | FAX (707) 869-8252

[stewards@stewardscr.org](mailto:stewards@stewardscr.org) | [www.stewardscr.org](http://www.stewardscr.org)

NONPROFIT  
ORGANIZATION  
US Postage PAID  
Permit No. 6  
Guerneville, CA  
95446

Return Service Requested

**Your Stewards Membership**  
includes a copy of this quarterly newsletter by email or mail, a 20% discount on retail items, special events & community education seminars.

**TO MAKE A VEHICLE DONATION CALL: (800) 320-0476**

## Stewards of the Coast and Redwoods Membership Form

*YES, I'd like to become a member!*

Name(s): \_\_\_\_\_

Address: \_\_\_\_\_

Phone: \_\_\_\_\_

Email: \_\_\_\_\_

- RENEWAL
- \$25 Owl (Senior/Student)
- \$35 Trillium (Individual)
- \$45 Otter (Family)
- \$100 Harbor Seal (Contributing)
- \$150 Bobcat (Business)
- \$250 Gray Whale (Patron)
- \$500+ Osprey Circle

Payment Type:  Check (made payable to Stewards)

Credit Card (VISA, MC, Discover acceptable)

Card #: \_\_\_\_\_ Exp. Date: \_\_\_\_\_ CVV #: \_\_\_\_\_

Signature: \_\_\_\_\_

- Use where needed most
- Fire Recovery for Armstrong Redwoods/Austin Creek

For more info on how you can contribute to Stewards' Endowments, please contact:

**Michele Luna**  
(707) 869-9177 X 4  
[michele@stewardscr.org](mailto:michele@stewardscr.org)